

# More than a Playlist: An Overview of Music Therapy

March 17, 2023

9 am – 12:15 pm

McCreary Tower  
475 Deacon Blvd  
Winston Salem, NC

## Program Overview and Objectives

This training will provide an overview of the music therapy profession, including information about board-certified music therapists, approaches to music therapy, types of interventions used in treatment, collaboration with other healthcare professionals, and how music therapy is specifically used in the Atrium Health Wake Forest Baptist system (namely the Amos Cottage Therapeutic Day Program). In this session, you can expect to grow your understanding of music therapy and how it benefits a variety of patient populations. Come join this hands-on session as we learn more about music's impact on the brain and how music is used as a therapeutic tool to reach non-musical therapeutic goals!

The Amos Cottage Therapeutic Day Program, part of the Department of Developmental and Behavioral Pediatrics with Atrium Health Wake Forest Baptist offers behavioral health intervention and academic supports with wrap-around services for children ages 3-7 demonstrating significant behavioral, social and or emotional challenges interfering with their ability to fully function in a class and or home setting. A multi-disciplinary team approach is employed to provide the child and family members with intensive treatment and support. One of the members of the treatment is a Board Certified Music Therapist; who uses Music as a treatment modality to reduce mental health symptoms and support the development of social and emotional competency skills of the children served.

### Upon completion of this course, you will be able to:

- Describe the role of Music Therapists and the services they provide.
- Identify music-based interventions used in music therapy.
- Identify various approaches to music therapy practice.
- Discuss how you can integrate music and/or music therapy into the work you do each day for more positive outcomes.

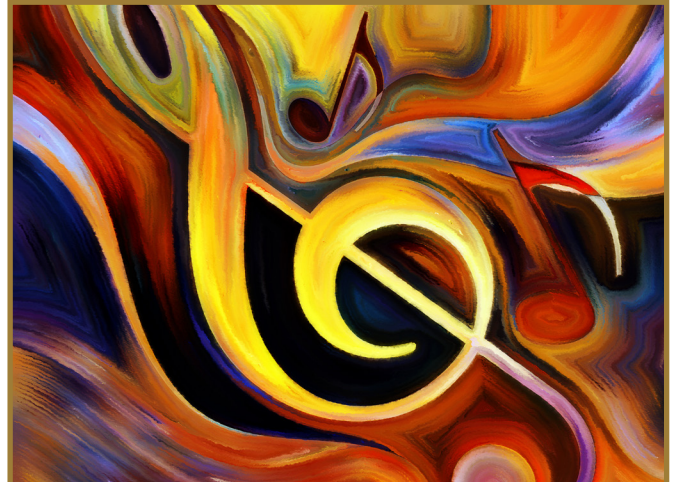
## Who Should Participate

This workshop will be beneficial to behavioral health and human service practitioners, including psychologists, social workers, counselors, marriage and family therapists, substance use and addictions professionals, clinicians and all others interested in this topic.

As part of our commitment to diversity and inclusion, the Northwest AHEC provides compassionate education and respectful care for all, regardless of socioeconomic status, race, ethnicity, language, nationality, sex, gender identity, sexual orientation, religion, geography, disability and age.

*Provided by:*

Northwest Area Health Education Center (AHEC), a program of Wake Forest University School of Medicine and a part of the NC AHEC System with The Amos Cottage Therapeutic Day Program part of the Department of Developmental and Behavioral Pediatrics with Atrium Health Wake Forest Baptist.



Register at [www.nwahec.org/69502](http://www.nwahec.org/69502)



**Wake Forest University**  
**School of Medicine**

**NORTHWEST AHEC**

PART OF NC AHEC

## Cost and Registration

### \$75—Registration fee

Registration fee includes administrative costs, technology fees, instructional materials, certificate of completion and program materials.

**Register and pay online** at [nwahec.org/69502](http://nwahec.org/69502) or complete and return the attached registration form. Payment by credit card (Visa, MasterCard and American Express) or Atrium Health Wake Forest Baptist internal transfer accepted online. Personal check, corporate check, money order, accepted by mail.

**Payment Policy**—Payment is required on or before entrance into any Northwest AHEC activity. If a corporate payment has not been received before the activity start date, you will be required to provide a personal credit card or check. To avoid personal payment, you should check with the financial staff at your organization to determine status of payment. If and when the corporate payment is received, Northwest AHEC will issue a full refund based on your original form of payment.

**Refund Policy**—Cancellations received in our office at least two weeks (14 business days) before the activity will receive a 100% refund. Registrants cancelling between two weeks and two full business days prior to the first day of the event will be refunded at 70% of the registration fee subject to a minimum \$25 cancellation fee. The registration fee will not be refunded if a cancellation is received less than two days before the activity. Cancellations must be in writing (fax, email). You may send a substitute in your place.

When planning for an educational activity, registration fees are not based on credit hours or agenda. Registration fees are based on expenses such as meeting room rentals, food, equipment, staff, etc., and are not adjusted by issues such as cancellation of speakers or other unforeseen circumstances. Every effort will be given to ensure the activity is a success.

If you have not received confirmation of your registration 24 hours before the program date, please call Michelle Adams at 336-713-7726 or email [micadams@wakehealth.edu](mailto:micadams@wakehealth.edu) to verify the status of your registration.

Attendance at this activity grants permission for Northwest AHEC to use any photographs, audio, video, or other images from this activity for promotional or educational purposes. Please notify a Northwest AHEC staff member if you have concerns.

## Credit

- 3.0 Contact Hours from Northwest AHEC
- Northwest AHEC is recognized by the North Carolina Psychology Board as an approved provider of (Category A) Continuing Education for North Carolina Licensed Psychologists. This program will provide 3.0 contact hours of (Category A) continuing education for North Carolina psychologists. No partial credit will be given.
- This program does not provide specific NBCC Credits. However, per LCMHC licensure guidelines, you may submit up to 15 contact hours of continuing education by attending programs by affiliates of the National Area Health Education Center Organization (NAO). Northwest AHEC is a member of the NAO.

Credit will be awarded based on participant selection at time of registration. Before selecting credits, please review our general [Credit Glossary](#) but note not all programs offer all credits.

Criteria for successful completion requires attendance for at least 90% of the activity and submission of the evaluation.

## Agenda

**8:30 am** Registration

**9 am** Introduction and Overview of Music Therapy Field

**10 am** Hands-on Music Therapy Intervention Experience

**10:30 am** Break

**10:45 am** Specific Approaches to Music Therapy

Interventions Used in Therapy

How Music Therapy is Integrated into Client Care

**11:45 am** Q & A

**12:15 pm** Adjourn

## For More Information and Assistance

We want to assure that all participants can benefit from our program. If you need auxiliary aids or special services to attend this program, please call Michelle Adams at 336-713-7726 or email at [micadamswakehealth.edu](mailto:micadamswakehealth.edu) at least five working days prior to the program.